



- Tamil: Kotook, Karandai, Kottakarthalai
- Telugu: Bodasaramu, Bodataramu
- Urdu: Mundi.

## SIDDHA PROPERTIES

*S. indicus* Linn. is used in Siddha system of medicine in the name of Kot.t.aikkarantai. Other properties as described in this system are listed below. It is used as one of the ingredient in the siddha preparation, "Veezhi Ennai (or Veezhi oil)."<sup>[12]</sup> Though this plant finds place in many preparations, this is the only preparation mentioned in the official publication.

- Suvai (Taste): Kaippu (Bitter)
- Tanmai (Potency): Veppam (Hot)
- Gunam: Ilaku (Soft)
- Pirivu (Transformation): Kārppu (Pungent)
- Ceikai (Action): Uḷḷalalārri (Demulcent), Uṭaratteri (Restorative), Puḷhukkollī (Anthelmintic), Uramaakki (Tonic).

## AYURVEDIC PROPERTIES

- Rasa: Madhura, Kaṭu, Tikta, Kasāya
- Guna: Laghu
- Virya: Usna
- Vipaka: Kaṭu
- Karma: Medhya, Viṭaghna, Vātakaphahara, Arśadosa, Vināśaka.<sup>[11]</sup>

## IMPORTANT AYURVEDIC FORMULATIONS

Navaratnarāja, Mṭgānka Rasa, Arka Muṭṭī, Guduchyadi taila, Vatagajankusha rasa, Munditika churna, Guduchi taila.<sup>[11]</sup>

## AYURVEDIC THERAPEUTIC USES

Gant.amālā, Apaci, Kut.t.ha, Kt.mi, Pāt.t.u, Slipada, Medaroga, Apasmara, Kasa, Mutrakrcchra, Tvaka Roga, Stana Saithalya, Yonirogā, Āmāṭisara, Āmaroga, Vātaroga, Gudaroga, Plihāroga, Chardi, Āmavāta, Gātradurgandhya, Sūryāvarta, Ardhāvabhāvabhedaka.<sup>[11]</sup>

## DOSE

3-6 g of the drug.<sup>[11]</sup>

## PHARMACOGNOSTIC STUDY

The physico-chemical parameters and estimation of

7-hydroxy eudesmanolide (1), a major sesquiterpene lactone had been carried out. *S. indicus* was described as a branched, hairy and strongly scented herb; leaves spatulate, sessile; flowers pinkish purple. Leaf shows uni-multicellular and club and clavate type of trichomes. Ring of deltoid vascular bundles and well-developed pith with few pitted cells are found in stem. Metaderm and radially arranged fibers are seen in root; in the cortical region secretory canal are alternatively arranged. Powder shows large number of different types of trichomes, pollen grains in pollen sacs and cruciferous stomata. 7-hydroxy eudesmanolide was quantified (0.0658% w/w) by high performance thin layer chromatography method using the solvent system of n-hexane: diethyl ether (3:7) at  $\lambda$  213 nm.<sup>[13]</sup>

## PHYTOCHEMICAL STUDIES

Sphaeranthine, an alkaloid of molecular formula  $C_{13}H_{19}O_5$  (m.p. 166-168°C) was isolated from the plant. The essential oil from the fresh flowering plant was isolated and it was characterized for physical and chemical properties viz., specific gravity at 30° (0.9419-68), refractive index at 20° (1.512), optical rotation (nil), acid value (2.4030), ester value (47.80), ester value after acetylation (74.15).<sup>[14]</sup>

The essential oil from the plant was reported to contain methyl chavicol (12),  $\delta$ -cadinene (11),  $\alpha$ -ionone (2), para-methoxycinnamaldehyde (4),  $\alpha$ -terpinene (9), citral (6), geraniol (7), geranyl acetate (8),  $\beta$ -ionone (3), oscimene (10), eugenol (5), sphaeranthene, sphaeranthol, estragole, indicusene.<sup>[15,16]</sup>

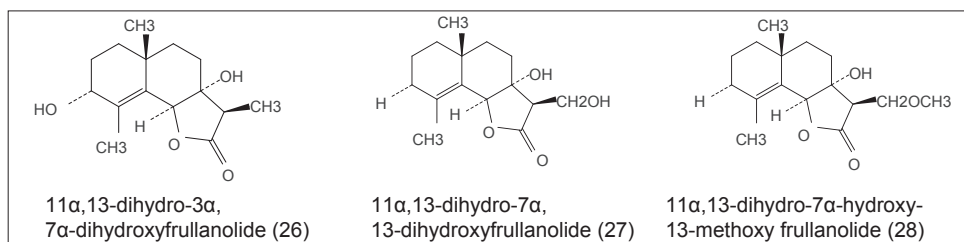
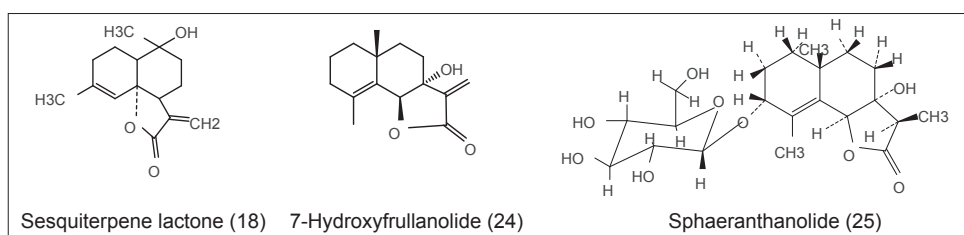
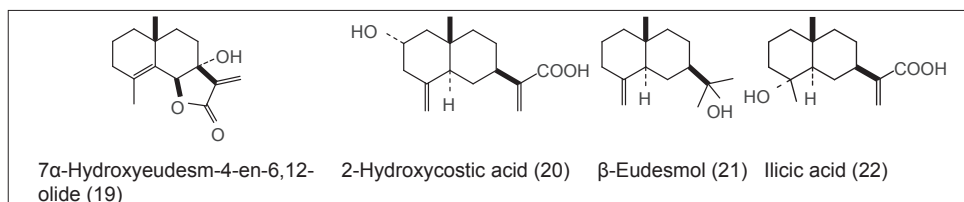
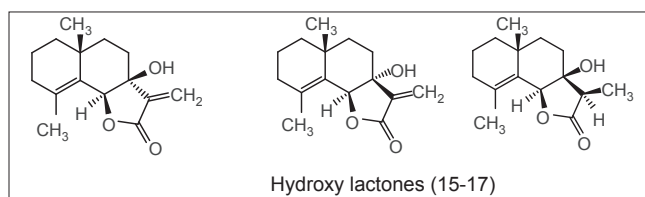
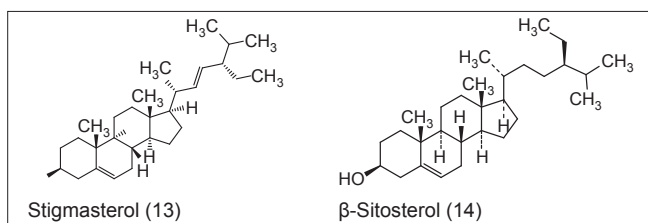
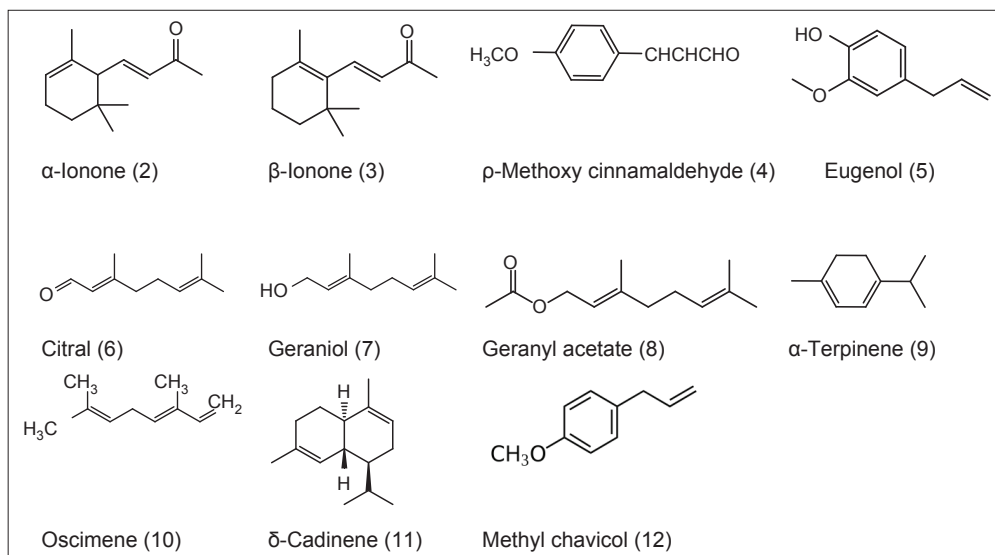
$\beta$ -Sitosterol, n-triacontanol, phenylurethane, n-pentacosane were isolated from oil.<sup>[17]</sup> The alcoholic extract yielded sterols, viz., stigmasterol (13) and  $\beta$ -sitosterol (14).<sup>[18]</sup>

Phytochemical analysis of *S. indicus* yielded three interesting hydroxy lactones (15-17).<sup>[19]</sup>

A bicyclic sesquiterpene lactone (18) was isolated from the petroleum ether extract of the aerial part.<sup>[20]</sup>

A new sesquiterpene lactone, 7 $\alpha$ -hydroxyeudesm-4-en-6, 12-olide (19) and a new sesquiterpene acid, 2-hydroxycostic acid (20), along with the known compounds  $\beta$ -eudesmol (21) and ilicic acid (22) have been isolated from the acetone extract of *S. indicus* L.<sup>[21]</sup>

A sterol glycoside has been isolated and characterized as  $\beta$ -D-glucoside of (24S)-24-ethylcholesta-4,22-dien-3- $\beta$ -ol (23).<sup>[22]</sup> 7-Hydroxyfrullanolide (7HF) (24), was reported from *S. indicus* Linn.<sup>[23]</sup> A new sesquiterpene glycoside, sphaeranthanolide (25), has been isolated from the flowers of *S. indicus*.<sup>[24]</sup>



Three new eudesmanolides, 11 $\alpha$ ,13-dihydro-3 $\alpha$ ,7 $\alpha$ -dihydroxyfrullanolide (26), 11 $\alpha$ ,13-dihydro-7 $\alpha$ ,13-dihydroxyfrullanolide (27) and 11 $\alpha$ ,13-dihydro-7 $\alpha$ -hydroxy-13-methoxy

frullanolide (28) were isolated from the flowers of *S. indicus*. Their structures were determined by 2D nuclear magnetic resonance and other spectroscopic techniques.<sup>[25]</sup>

Two *Sphaeranthus* peptide alkaloids (1 and 2) (29,30) have been isolated from flowers.<sup>[26]</sup>

Two new eudesmanolides (31 and 32) along with 7 $\alpha$ -hydroxyeudesm-4-en-6,12-olide (33) and two sesquiterpenoids, cryptomeridiol (34) and 4-epicryptomeridiol (35) have been isolated from *S. indicus*.<sup>[27]</sup>

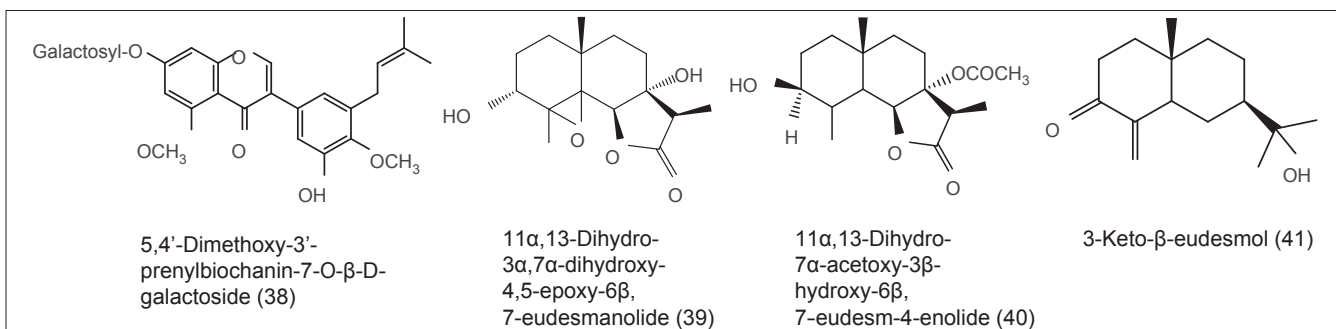
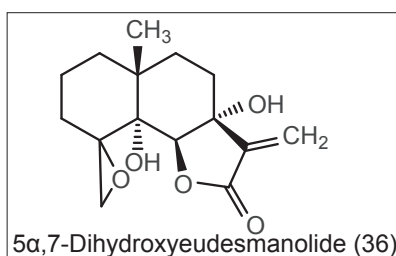
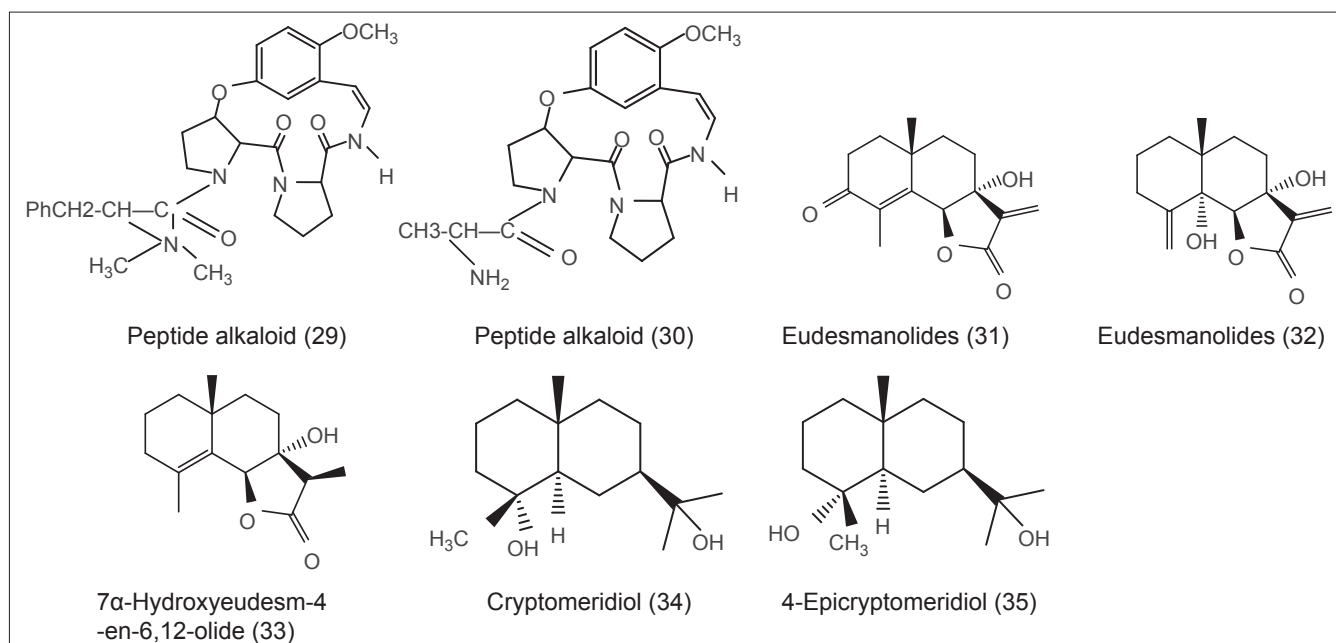
A new 5 $\alpha$ ,7-dihydroxyeudesmanolide (36) along with two known eudesmanolides (31,32) have been obtained from the photo-oxidation of a known 7-hydroxyeudesmanolide.<sup>[28]</sup>

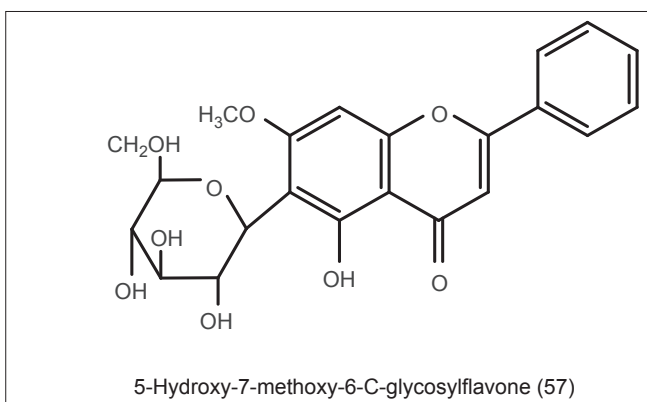
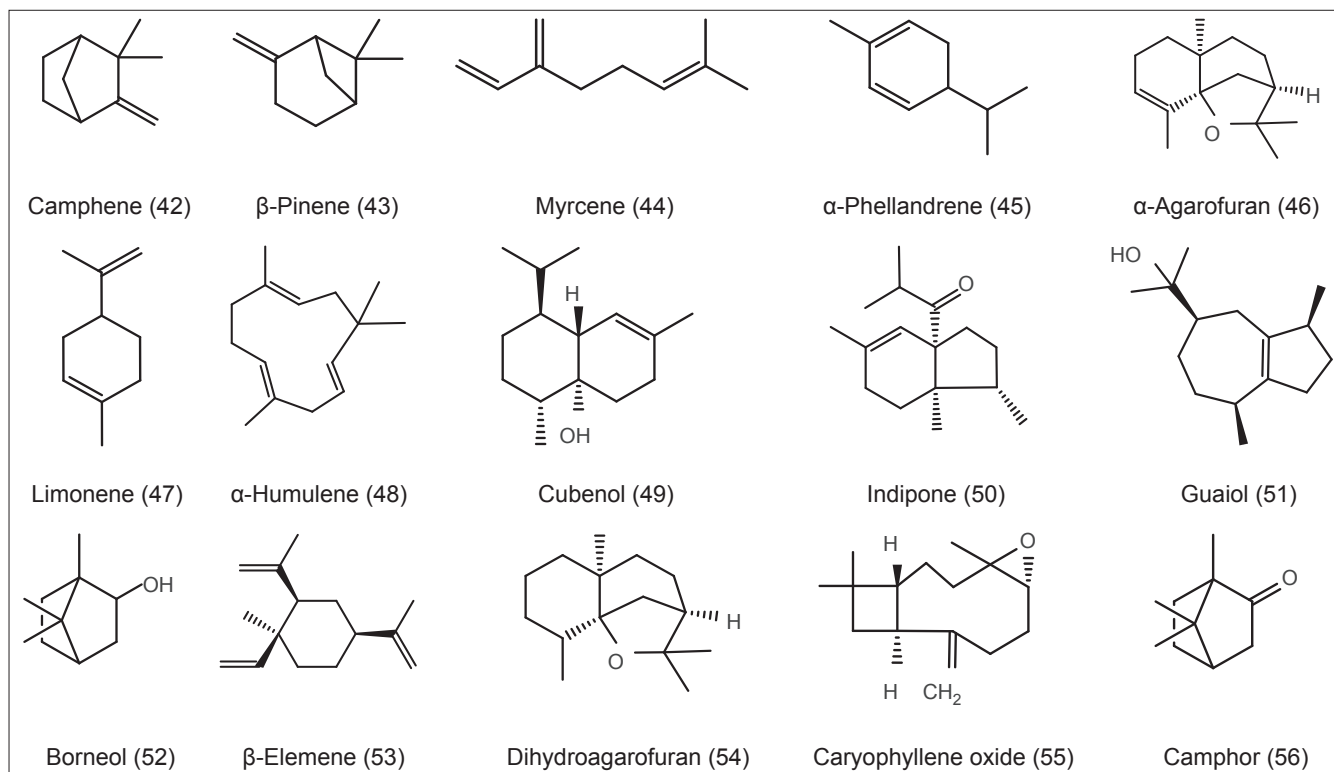
Amino acids, viz., glycine, alanine, valine, leucine, histidine, cysteine, lysine, aspartic acid and glutamic acids and sugars

viz., D-arabinose, L-rhamnose, lactose, raffinose, D-galactose, maltose, D-fructose and D-glucose were reported the chemical examination of the leaves of *S. indicus*.<sup>[29]</sup>

A new flavone glycoside, 7-hydroxy-3,4,5,6-tetramethoxy flavone 7-O- $\beta$ -D-diglucoiside (37) was isolated from the stem.<sup>[30]</sup> A novel isoflavone glycoside, 5,4'-dimethoxy-3'-prenylbiochanin 7-O- $\beta$ -D-galactoside (38), was isolated from the leaves of *S. indicus*.<sup>[31]</sup>

Three new eudesmanoids have been isolated from whole plant and their structures were established as 11 $\alpha$ ,13-dihydro-3 $\alpha$ ,7 $\alpha$ -dihydroxy-4,5-epoxy-6 $\beta$ ,7-eudesmanolide (39), 11 $\alpha$ ,13-dihydro-7 $\alpha$ -acetoxy-3 $\beta$ -hydroxy-6 $\beta$ ,7-eudesm-4-enolide





(40) and 3-keto- $\beta$ -eudesmol (41) by comparison of spectral data with those of other  $7\alpha$ -hydroxyeudesmanolides.<sup>[32]</sup>

The hydro distilled essential oil of *S. indicus* was analyzed by gas chromatography (GC) and GC/mass spectrometry. Thirty-eight compounds making up 84.0% of the oil were identified. The major compounds were: 2,5-dimethoxy- $\rho$ -cymene (18.2%),  $\alpha$ -agarofuran (11.8%) (46), 10-epi- $\gamma$ -eudesmol (7.9%) and selin-11-en-4 $\alpha$ -ol (12.7%). Other detected compounds were (Z)-3-hexenol, (E)-2-hexenol,  $\alpha$ -pinene, camphene (42), 6-methyl 5-hepten-2-one,  $\beta$ -pinene (43), myrcene (44),  $\alpha$ -phellandrene (45),  $\rho$ -cymene, limonene (47),  $\alpha$ - $\rho$ -dimethylstyrene, linalool, camphor (56), borneol (52), terpinen-4-ol, nerol, neral, geraniol, geranial, maaliene,  $\beta$ -cubebene,  $\beta$ -elementene (53),  $\beta$ -caryophyllene, 2,5-dimethoxy-1-isopropenyl-4-isopropylbenzene,

$\alpha$ -humulene, dihydroagarofuran (54), indipone (52), caryophyllene oxide (55), globulol, cis-ar-teannuic alcohol, guaiol (51), trans-ar-teannuic alcohol, cubenol (49),  $\alpha$ -muurolol,  $\alpha$ -eudesmol and valianol.<sup>[33]</sup>

A novel flavonoid C-glycoside, 5-hydroxy-7-methoxy-6-C-glycosylflavone (57), was isolated from the aerial part. Its structure was elucidated by spectroscopic methods.<sup>[34]</sup>

Two new eudesmanolides have been isolated<sup>[35]</sup> from the aerial part and their structures have been established as 11 $\alpha$ ,13-dihydro-3 $\alpha$ ,7 $\alpha$ -dihydroxyeudesm-4-en-6 $\alpha$ ,12-olide, 4-en-6 $\beta$ ,7 $\alpha$ -eudesmanolide, based on the spectral data and in comparison of spectral data with those of reported data of 11 $\alpha$ ,13-dihydro-3 $\alpha$ ,7 $\alpha$ -dihydroxyfrullanolide,<sup>[25]</sup> eudesmanolide-4<sup>[19]</sup> and  $\gamma$ -cyclocostunolide.<sup>[36]</sup>

## PHARMACOLOGICAL STUDIES

### Ovicidal activity

Sesquiterpene lactone, isolated from a petroleum ether extract of *S. indicus*, was screened for its effects on the hatching of eggs and the metamorphosis of larvae of *Culex quinquefasciatus* at concentration of 50-250 ppm. Rates of fecundity and fertility were found to be affected in the larval-treated adult females. Egg hatching was also significantly lowered. Mortality in the larvae, pupae and adults produced a marked decrease in mosquito populations in laboratory experiments.<sup>[37]</sup>



### Hepatoprotective activity

The protective effect of methanolic extract of *S. indicus* Linn. (MES) against  $\text{CCl}_4$  induced hepatotoxicity was studied in animal models. It showed a significant protective effect by lowering the serum aspartate aminotransferase, alanine aminotransferase and alkaline phosphatase (ALP).<sup>[38]</sup>

The aqueous (AQS) and methanolic (MES) extracts of flower head of *S. indicus* L. were evaluated for the hepatoprotective and antioxidant effect on acetaminophen (APAP)-induced hepatotoxicity in rats. Oral dose of MES (300 mg/kg) showed a significant hepatoprotective effect (serum glutamic oxaloacetic transaminase (SGOT), serum glutamic pyruvic transaminase (SGPT), acid phosphatase (ACP) and ALP) than aqueous extract. MES exhibited significant antioxidant activity showing increasing levels of superoxide dismutase (SOD), catalase (CAT) and glutathione peroxidase (GPX) by reducing malondialdehyde levels.<sup>[39]</sup>

Ethanol extract in the doses 200 and 300 mg/kg bw, of aerial parts of *S. indicus* L. was investigated for hepatoprotective activity against paracetamol induced liver damage of rat. 300 mg/kg of extract showed significant protection against paracetamol-induced hepatocellular injury.<sup>[40]</sup>

Aqueous extract (200 and 300 mg/kg b/w) of root of *S. indicus* L. was evaluated for hepatoprotective activity against APAP induced hepatotoxicity in rats. The activity of 300 mg/kg of the extract was comparable to standard drug, silymarin (50 mg/kg body weight).<sup>[41]</sup>

### Antitussive activity

The successive methanol extract of *S. indicus* (MESI) exhibited antitussive activity and synergistic effects of sleeping time induced by standard sedatives using Swiss Albino mice. The MESI of (200, 300 and 400 mg/kg) showed maximum inhibition of cough by 71.24%, 76.84% and 77.92% and also exhibited significant synergistic effect ( $P < 0.001$ ) at the dose levels of 200, 250 and 300 mg/kg when compared with control and standard sedative pentobarbitone and diazepam. The MESI produced significant synergistic effects three times greater than that of standard sedatives.<sup>[42]</sup>

### Wound healing activity

A cream containing ethanolic extract of aerial parts of *S. indicus*, L. (Asteraceae) was evaluated for wound healing activity in guinea pigs. The cream was applied *in-vivo* on the paravertebral area of six excised wounded models once a day for 15 days. The cream significantly enhanced the rate of wound contraction and the period of epithelialization comparable to neomycin.<sup>[43]</sup>

The wound healing activity of ointments comprising various percentage of alcoholic extract of *S. indicus* flower head was tested for protection against microbial invasion by providing better tissue formation. The formulation comprising of

2% (w/w) alcoholic extract was found to be superior to control and standard formulation.<sup>[44]</sup>

A randomized placebo controlled single blind study was conducted on 45 patients ( $n = 30$  test and  $n = 15$  control groups) to test the efficacy and safety of *S. indicus* L., cream of *Lawsonia inermis* L. and *Plumbi oxidum*. The test drug formulations were found to be effective in healing and relieving the symptoms of cervical erosion with cervicitis.<sup>[45]</sup>

### Anxiolytic activity

The petroleum ether (10 mg/kg), alcohol (10 mg/kg) and water extracts (30 mg/kg) of flowers were tested to assess the anxiolytic activity in mice. Petroleum ether extract of *S. indicus* flowers produced prominent anxiolytic activity.<sup>[46]</sup>

### Neuroleptic activity

Neuroleptic activity of extract of flowers was evaluated in apomorphine induced cage climbing and catalepsy in mice models. The petroleum ether extract (300 mg/kg, i.p.) reduced total time spent in apomorphine induced cage climbing. Aqueous and alcoholic extracts showed catalepsy while petroleum ether extract was devoid of it.<sup>[47]</sup>

### Immunomodulatory activity

Immunostimulant activity of sphaeranthanolid was tested by Jerne plaque assay method. This compound was found to be an immune modulator.<sup>[24]</sup>

Methanol extract, its petroleum ether, chloroform and remaining methanol fractions, of flower heads were found effective in increasing phagocytic activity, hemagglutination antibody titer and delayed type hypersensitivity, whereas only remaining methanol fraction was found active in normalizing total white blood cell levels in case of cyclophosphamide induced myelosuppression in mice. The study, therefore, revealed that the drug holds promise as immunomodulatory agent, which acts by stimulating both humoral as well as cellular immunity and phagocytic function.<sup>[48]</sup>

The bioactive fraction exhibited dose dependent increase in humoral and cell-mediated immunity and offers protection against immunosuppression induced by the cytotoxic agent cyclophosphamide.<sup>[49]</sup>

The petroleum ether extract from the flower heads of *S. indicus* Linn. was found to be effective in increasing phagocytic activity, hemagglutination antibody titer and delayed type hypersensitivity. The extract acts by stimulating both humoral and cellular immunity as well as phagocytic function.<sup>[50]</sup>

### Antifeedant activity

MESI showed antifeedant activity against 4<sup>th</sup> instar larvae of *Spodoptera litura*. Among the compounds isolated from this

fraction, 7-hydroxy frullanolide had high antifeedant activity at 1,000-ppm. Deformities in larvae, pupae and adult were also observed.<sup>[51]</sup>

### Anthelmintic activity

The anthelmintic activities of ethanolic and aqueous extracts (10, 50, 100 mg/ml concentration levels) of the whole plant were tested against *Pheretima posthuma* and *Ascaridia galli*. Both extracts exhibited anthelmintic activity in a dose-dependent manner. The most significant activity was observed at the highest concentration of 100 mg/ml against both types of worms.<sup>[52]</sup>

### Analgesic Activity

The ethanol extracts of the whole plant *S. indicus* Linn. exhibited dose dependent analgesic activity with 66.6 and 67.4% of protection when tested with 250 mg and 500 mg/kg b.w. by tail immersion method in rat models using pentazocine 10 mg/kg as standard.<sup>[53]</sup>

### Analgesic and antipyretic activity

The analgesic and antipyretic activity of the successive taking petroleum ether, benzene, chloroform, ethanol and triple distilled water extracts (200 mg/kg and 400 mg/kg b.w) of whole plant was screened for analgesic and antipyretic activities on Albino rats by Eddy's hot plate, Tail immersion and Brewer's yeast induced pyrexia method. The petroleum ether, chloroform and ethanol extracts showed significant analgesic activity in both doses as compared to the standard drug diclofenac sodium. The chloroform and ethanol extracts showed potential significant antipyretic activity from 1 h onward whereas aqueous extracts exhibited activity from 2 h onward as compared to the standard drug paracetamol amongst various extracts.<sup>[54]</sup>

### Anti-diabetic activity

The anti-hyperglycemic effect of *S. indicus* extract was carried out in diabetic rats induced by nicotinamide (120 mg/kg i.p.) and streptozotocin (STZ) (60 mg/kg i.p). Oral administration of alcoholic extract of *S. indicus* for 15 days exhibited in significant reduction in blood glucose levels and increases in hepatic glycogen and plasma insulin levels and significant improvement in oral glucose tolerance test. Glibenclamide was used as a reference standard.<sup>[55]</sup>

The ethanol extract of aerial part was evaluated for anti-diabetic activity using the glucose uptake by isolated rat hemi-diaphragm *in-vitro* model. *S. indicus* increased the uptake of glucose by isolated rat hemi-diaphragm significantly ( $P < 0.01$ ) and was found to be more effective than insulin and it will be alternative choice for the treatment of diabetes mellitus caused in the consequences of resistance to stimulatory effect of insulin on glucose transporter type 4 protein.<sup>[56]</sup>

The effect of the methanol extract in dexamethasone-induced insulin resistance in mice was studied. The mice were treated

with dexamethasone for 22 days. The *S. indicus* extract showed significant decrease in plasma glucose and serum triglyceride levels at doses, of 400 and 800 mg/kg, p.o. and stimulated insulin assisted and non-insulin assisted glucose uptake in skeletal muscle. The extract significantly restored dexamethasone induced body weight loss thereby suggesting its effect in the treatment of type II diabetes mellitus.<sup>[57]</sup>

Dried petroleum ether (60-80°C) extract of flower head of *S. indicus* was screened for activity against alloxan induced hypoglycemia in Wistar rats. The oral administration of flower head extract at doses of 200 mg/kg lead to a significant blood glucose reduction.<sup>[58]</sup>

The anti-diabetic effect of MES in alloxan induced diabetic rabbits in comparison with 80 mg/kg of diamicon standard was studied. The extract at the dose of 300 mg/kg body weight significantly reduced the blood glucose level, plasma total cholesterol, triglycerides and low density lipoprotein (LDL) in treated rabbits as compared to diabetic rabbits; also significantly increased the level of high density lipoprotein (HDL) ( $36.95 \pm 2.95$ ); SGOT and SGPT also significantly decreased.<sup>[59]</sup>

### Anti-diabetic, antihyperlipidemic and antioxidant

The anti-diabetic, antihyperlipidemic and *in-vivo* antioxidant properties of the root in STZ-induced type 1 diabetic rats was studied. The ethanolic extract 100 and 200 mg/kg to the diabetic rats showed significant reduction in blood glucose and increase in body weight compared with diabetic control rats. Both doses showed significant alteration in elevated lipid profile levels, significant increase in SOD, CAT, GPX and decrease in thiobarbituric acid reactive substances levels than diabetic control rats. 200 mg/kg produced significant higher antioxidant activity than 100 mg/kg. These activities are possibly due to the presence of biomarkers gallic acid and quercetin revealed by high performance liquid chromatography analysis of the extract.<sup>[60]</sup>

### Antimicrobial activity

The bicyclic sesquiterpene lactone isolated from the petroleum ether extract of the aerial part has been found to be potent against *Staphylococcus aureus*, *Escherichia coli*, *Fusarium* sp., *Helminthosporium* sp., and other microorganisms.<sup>[20]</sup> 7HF, a sesquiterpene lactone showed antimicrobial activity.<sup>[23]</sup> Alcoholic and aqueous extracts of the plant were highly effective against *Alternaria solani*, *Fusarium oxysporum* and *Penicillium pinophilum* by preventing their growth to a greater extent.<sup>[61]</sup> Antimicrobial activity of terphenoidal compound isolated from *S. indicus* showed activity against *Bacillus subtilis*.<sup>[62]</sup> The *in-vitro* antimicrobial activity of aqueous extract of flower was evaluated against coliforms *E. coli* (10,536) and total coliforms by using disc diffusion method. The extracts showed significant inhibition against coliform strains.<sup>[63]</sup>

Leaves, flower stem and roots were extracted separately with methanol, ethanol, chloroform, petroleum ether and hot water and the extracts were screened for its phytochemical constituents. The plant revealed the presence of alkaloids, saponins, tannins, flavonoids, steroids, terpenoids, cardiac glycosides, amino acids, mono saccharides and reducing sugar. Leaves extracts showed significant amount of phytochemicals and hence antimicrobial studies of leaves extracts were carried out against bacterial species such as *Bacillus* sp., *Staphylococcus* sp., *Klebsiella* sp., *E. coli*, *Pseudomonas* sp., using filter paper and agar well diffusion method at 4 different concentrations. MES and AQS of leaf showed the highest inhibitory effect compared to all other extracts and it showed good inhibitory activity against *Bacillus* sp., followed by *Staphylococcus* sp. The gram-positive bacteria were found to be more susceptible than gram-negative bacteria. Antifungal activity of methanol and ethanol extracts were tested against *Penicillium* sp., and *Aspergillus* sp. and the growth was found to decrease with increase in concentration of the extracts.<sup>[64,65]</sup>

Hexane, benzene, chloroform, ethyl acetate and acetone extracts of the aerial parts and flowers showed activity against *B. subtilis*, *S. aureus* and *Staphylococcus epidermidis*. Benzene and chloroform extracts of flower and benzene and acetone extracts of aerial parts were not active against *Enterococcus faecalis*; all extracts of flower and aerial part were not active against *E. coli* and *Klebsiella pneumonia* when tested by disc diffusion method.<sup>[66]</sup>

Four new alkaloids have been isolated from the alcoholic extract of flowers. The crude extract showed antibacterial activity against 18 different gram-positive and gram-negative bacteria. Both alkaloidal and non-alkaloidal fractions showed the activity. The isolated two alkaloids showed broad spectrum activity.<sup>[67]</sup>

Ten Indian medicinal plants were screened for antibacterial activity specific to enteropathogens. Diffusion and dilution methods were used to measure the antibacterial activity. *Allium sativum*, *Camellia sinensis* and *Chamaesyce hirta* showed higher activity when compared to the rest. They had a minimum bactericidal concentration of < 100 µg/ml and gave inhibition zones of more than 2 cm. Among the pathogens studied, *Vibrio cholerae* and *Shigella flexneri* were found to be highly susceptible to the plant extracts.<sup>[68]</sup> The essential oil from the leaves exhibited antibacterial activity against *Salmonella paratyphi* A, B and C, *S. flexner*, *Salmonella enteritidis*, *Salmonella typhimurium*, *Shigella sonnei* and *Vibrio cholera*.<sup>[69]</sup> The fruits showed very good antibacterial activity against gram-positive and gram-negative bacteria.<sup>[70]</sup> The plant also exhibited antifungal activity.<sup>[71]</sup> The petroleum ether, acetone, methanol (90%) and aqueous extracts of flowers also exhibited remarkable antibacterial and strong antifungal activities.<sup>[72]</sup>

The hexane, chloroform, ethyl acetate, ethanol, methanol

and aqueous extract of entire part including flower heads exhibited antimicrobial activity compared with gentamycin and nystatin as standards. The chloroform, methanol and aqueous extracts showed high antibacterial activity against *S. aureus*; chloroform, methanol and ethanol extract against *P. aeruginosa*, methanol, chloroform and hexane against *B. subtilis*, aqueous, methanol, ethyl acetate and chloroform against *E. coli*.<sup>[73]</sup>

#### Antiviral activity

The methanol extract was found to exhibit inhibitory activity against *Mouse corona virus* and *Herpes simplex virus* at a concentration of 0.4 µg/ml.<sup>[74]</sup> The plant also showed antiviral activity against vaccinia and ranikhet viruses.<sup>[75]</sup>

#### Macrofilaricidal activity

The methanolic extract showed macrofilaricidal activity (4 mg/ml) against adult *Setaria digitata*, the cattle filarial worm when tested by worm motility assay method.<sup>[76]</sup>

#### Larvicidal action

Acetone extract of root and leaf caused > 50% mortality in an Indian mosquito specie, which acts as a vector of filarial worm. Root extract was more active than leaf extract.<sup>[77]</sup> Purified fraction of acetone extract showed mosquito larvicidal effect. Methanolic extract showed repellent and feeding deterrent activities against *Tribolium castaneum* in the lower concentration of 1%; complete feeding deterrent activity at 5 ml and repellent activity at 4 ml dose.<sup>[78]</sup>

#### Antioxidant activity

The free radical scavenging potential of the plant was studied by using different antioxidant models of screening. The ethanolic extract at 1,000 µg/ml showed maximum scavenging of the radical cation, 2,2-azinobis-(3-ethylbenzothiazoline-6-sulphonate) observed up to 41.99% followed by the scavenging of the stable radical 1,1-diphenyl, 2-picryl hydrazyl (33.27%), SOD (25.14%) and nitric oxide radical (22.36%) at the same concentration. However, the extract showed only moderate scavenging activity of iron chelation (14.2%). Total antioxidant capacity of the extract was found to be 160.85 nmol/g ascorbic acid. The results justify the therapeutic applications of the plant in the indigenous system of medicine, augmenting its therapeutic value.<sup>[79]</sup>

#### Attenuation effect on prostatic hypertrophy

The attenuating effect of petroleum ether, ethanolic, aqueous extracts and β-sitosterol on prostatic hyperplasia induced by testosterone in Albino rats. Finasteride was used as a positive control (1 mg/kg p.o.). The petroleum ether extract exhibited the best activity, although the ethanol and aqueous extracts also exhibited significant activity thereby indicating the potential use of *S. indicus* in the treatment of prostatic hyperplasia.<sup>[80]</sup>



### Anxiolytic, central nervous system depressant and anticonvulsant activities

The hydroalcoholic extract in the doses of 100, 200, 500 mg/kg, p.o. was experimented on induced anxiety, depression and convulsions in rodents; anticonvulsant effect on pentylenetetrazole-induced convulsions in mice; and maximal electroshock-induced convulsions in rats. *S. indicus* demonstrated anxiolytic, central nervous depressant and anticonvulsant activities in rodents; thus, supporting the folk medicinal use of this plant in nervous disorders.<sup>[81]</sup>

### Effect on psoriasis

The effect of *S. indicus* on psoriasis was studied and found to exhibit the potent activity.<sup>[82]</sup>

### Bronchodilatory effect

The methanolic extract and its fractions viz. petroleum ether, benzene, chloroform and ethyl acetate exhibited significant protection against bronchospasm, induced by histamine in guinea pigs. Significant protection exhibited by methanolic extract was comparable with the standard chlorophenamine maleate (2 mg/kg).<sup>[83]</sup>

### Mast cell stabilizing activity

The protective effect of different extracts of whole plant against the compound 48/80 and sheep serum induced mast cell degranulation was evaluated. The ethanol extract at the dose levels of 150 mg/kg and 300 mg/kg and ethyl acetate extract at the dose levels of 100 mg/kg, 150 mg/kg and 300 mg/kg showed slightly better protection of mast cell degranulation (77-86%) than ketotifen (75%) in the sheep serum model. These extracts also showed better mast cell stabilizing activity (77-88%) than the standard drug (69%) when peritoneal mast cells are treated with compound 48/80. These results suggest that *S. indicus* has potent mast cell stabilizing effects thereby inhibiting mediator release from mast cells.<sup>[84]</sup>

### Antihyperlipidemic activity

The alcoholic extract of flower heads in atherogenic diet induced hyperlipidemia in rats was investigated for the dose of 500 mg/kg/day, p.o. for 8 days. The extract effectively suppressed the hyperlipidemia by decreasing total cholesterol, triglyceride, LDL and very low density lipoprotein (VLDL); increasing the HDL.<sup>[85]</sup>

### Anti-arthritis activity

The anti-arthritis activity of the petroleum ether extract of the flowers in the doses 10, 30 and 100 mg/kg/day p.o. was investigated against complete Freund's adjuvant induced arthritis in laboratory rats. Indomethacin (2 mg/kg/day p.o.) was the standard drug. The dose of 100 mg/kg/day p.o. showed significant anti-arthritis activity.<sup>[86]</sup>

### Anti-inflammatory activity

The anti-inflammatory effect of ethanolic extract was

evaluated. The extract in different doses (100, 200 and 400 mg/kg, p.o.) exhibited dose dependent and significant anti-inflammatory activity in acute (carrageenan induced hind paw edema,  $P < 0.05$ ) and chronic (cotton pellet granuloma formation,  $P < 0.05$ ) model of inflammation.<sup>[87]</sup>

### Anti-inflammatory and analgesic activity

The anti-inflammatory and analgesic activities of ethanolic extract of *S. indicus* flowers in doses of 300 and 500 mg/kg was tested on Albino mice and rat of either sex. Anti-inflammatory activity was evaluated by measuring the mean decrease in hind paw volume after the sub planter injection of carrageenan. The analgesic activity was tested against acetic acid induced writhing response using Albino rats. At the end of 1 h, the inhibition of paw edema was 42.66 and 50.5% respectively and the % of protection from writhing was 62.79 and 68.21 respectively.<sup>[88]</sup>

### Anti-inflammatory, anti-migratory and anti-proliferative activity

Chronic inflammation induced hyper-proliferation and migration of keratinocytes are pathological hallmarks of psoriasis. Extracts from *Sphaeranthus* spp. demonstrate pharmacological activity *in-vitro* and *in-vivo*. However, the activity in modulating disease relevant pathways in psoriasis has not been reported. In the current study a standardized herbal extract from *S. indicus* (NPS31807) was used to study the mechanistic activity under conditions of inflammation, keratinocyte proliferation and migration using cell based and gene expression assays. NPS31807 treatment reduced levels of pro-inflammatory cytokines from human macrophages and activated epidermal keratinocytes in a dose dependent manner. Treatment with NPS31807 diminished NFκB and AP-1 transcription activity in human macrophages. Lowered nuclear translocation of p65 sub-unit in macrophages by treatment confirmed reduced activity of NFκB. Gene expression profiling showed attenuated expression of genes involved with inflammation such as tumor necrosis factor (TNF) signaling and angiogenesis by NPS31807. Inhibition of angiogenesis and matrix metalloproteinase production in keratinocytes was confirmed using real-time quantitative-polymerase chain reaction assays. Pretreatment with NPS31807 led to significant reduction of signal transducer and activator of transcription 3 phosphorylation and mitogen induced cellular migration. NPS31807 induced inhibition of proliferative genes and BrdU uptake in epidermal keratinocytes. In summary, our study provides novel molecular insights into the anti-inflammatory, anti-migratory and anti-proliferative properties of NPS31807. In summary, NPS31807, an extract from *S. indicus* can be used as therapeutic option in inflammatory and auto-immune conditions such as psoriasis.<sup>[89]</sup>

The anti-inflammatory effect *S. indicus* was found to be potent in suppressing the proinflammatory cytokines interleukin-8 (IL-8) and TNF-α induced by the culture

supernatant of *Propionibacterium acnes* in polymorphonuclear leukocytes and monocytes than that of other tested plants, viz., *Rubia cordifolia*, *Curcuma longa*, *Hemidesmus indicus* and *Azadirachta indica*.<sup>[90]</sup>

7HF significantly reduced the production (induced/spontaneous) of TNF- $\alpha$  and IL-6 from freshly isolated human mononuclear cells, synovial tissue cells isolated from patients with active rheumatoid arthritis and BALB/c mice. Oral administration of 7HF significantly protected C57BL/6J mice against endotoxin-mediated lethality. In the dextran sulfate sodium (DSS) model of murine colitis, oral administration of 7HF prevented DSS-induced weight loss, attenuated rectal bleeding, improved disease activity index and diminished shortening of the colon of C57BL/6J mice. Histological analyses of colonic tissues revealed that 7HF attenuated DSS-induced colonic edema, leukocyte infiltration in the colonic mucosa and afforded significant protection against DSS-induced crypt damage. 7HF was also significantly efficacious in attenuating carrageenan-induced paw edema in Wistar rats after oral administration. In the collagen-induced arthritis in DBA/1J mice, 7HF significantly reduced disease associated increases in articular index and paw thickness, protected against bone erosion and joint space narrowing and prominently diminished joint destruction, hyperproliferative pannus formation and infiltration of inflammatory cells. These results provide evidence that 7HF-mediated inhibition of pro-inflammatory cytokines functionally results in marked protection in experimental models of acute and chronic inflammation.<sup>[91]</sup>

#### Hypolipidemic activity

The effect of AQS (300 mg/kg/day, i.p) against dexamethasone (10 mg/kg/day, s.c) induced changes in lipid profile was studied in rat. *S. indicus* decreased the serum total cholesterol, triglyceride, LDL and VLDL significantly but not HDL; it also reduced atherogenic index significantly thus indicating its lipid lowering effect.<sup>[92]</sup>

#### Nephroprotective effect

The ethanolic extract was screened for nephroprotectivity in gentamicin induced acute renal injury in rats. The extract in the dose of 300 mg/kg was found to increase blood urea, serum creatinine and decrease the total protein and serum albumin of the treated group compared to normal group.<sup>[93]</sup>

#### Other activities

The plant was also found to exhibit anticancer activity and antiprotozoal activity against *Entamoeba histolytica*.<sup>[75]</sup> The alcoholic extract of the flower exhibited hypotensive, peripheral vasodilatory and cathartic activities.<sup>[94]</sup> The extract of the plant was found to inhibit hyaluronidase.<sup>[95]</sup> The extract effected toxicity on second and fourth instar larvae of *Culex quinquefasciatus* mosquito at 100-500 ppm concentration.<sup>[96]</sup> The methanolic extract of dried fruit exhibited nematocidal

activity.<sup>[97]</sup> The methanolic extract (<4 mg/mL) showed macrofilaricidal activity within an incubation period of 100 min by the worm motility assay against adult *S. digitata*, a cattle filarial worm.<sup>[78]</sup>

## CONCLUSION

From the literature survey it is evident that *S. indicus* Linn. has been exhaustively worked out for both chemical and pharmacological studies. In all the reported pharmacological activities, it is found to be more potent. It finds a broad spectrum of therapeutic usage. As the plant is widely distributed, it could be considered for new drug formulations.

## ACKNOWLEDGMENT

Author is thankful to Dr. M. Padma Sorna Subramanian, Research Officer (Botany), SMPG, Mettur for plant photograph, Shri. D. Radhakrishna Reddy for technical help and Research Officer (S) I/c, SCRI for encouragement.

## REFERENCES

- Anonymous. The Wealth of India: Raw Materials. Vol. X. New Delhi: Publication and Information Directorate, CSIR; 1976. p. 4.
- Nadkarni AK. Indian Materia Medica. Vol. 1. 3<sup>rd</sup> ed. Bombay: Popular Prakashan Private Limited; 2007. p. 1163.
- Chopra RN, Chopra IC, Handa KL, Kapur LD. Chopras Indigenous Drug of India. Calcutta, India: U.N. Dhur and Sons; 1958. p. 601.
- Dymock W, Warden CJ, Hooper D. Pharmacographia India. Vol. 2<sup>nd</sup>. London: Kegan Paul, Trench, Trubner and Co.; 1891. p. 257.
- Nadkarni KM. Indian Materia Medica. 3<sup>rd</sup> ed., Vol. 1. Bombay: Popular Prakashan; 1976. p. 1162.
- Kirtikar KR, Basu BD. Indian Medicinal Plants. Vol. II. Dehra Dun: International Book Distributors; 1999. p. 1347-8.
- Galani VJ, Patel BG, Rana DG. *Sphaeranthus indicus* Linn.: A phytopharmacological review. Int J Ayurveda Res 2010;1:247-53.
- Makhija K, Richard L, Kirti SP, Saleemullah K, Jessy M, Shirwaikar A. *Sphaeranthus indicus*: A review of its chemical, pharmacological and ethnomedicinal properties. Int J Pharmacol 2011;7:171-9.
- Chakraborty AK, Behera M, Roy H, Rambhade S. *Sphaeranthus indicus* Linn.: A phytopharmacological review. Int J Drug Formul Res 2010;1:113-33.
- Harshal AP, Deepika T. A comprehensive review on *Sphaeranthus indicus* Linn. Global J Res Med Plants and Indigen Med 2012;1:404-10.
- Anonymous. The Ayurvedic Pharmacopoeia of India. Part I. Vol. III. New Delhi: Department of ISM and H, Ministry of Health and Family Welfare, Government of India; 2001. p. 127-8.
- Anonymous. The Siddha Formulary of India. Part II. 1<sup>st</sup> ed. (Tamil version). New Delhi: Department of AYUSH, Ministry of Health and Family Welfare, Government of India; 2011. p. 142-3.
- Vikani KV, Dangar RD, Kapadia NS, Shah MB. A pharmacognostic study on *Sphaeranthus indicus*. J Nat Rem 2008;8:61-7.
- Basu NK, Lamsal PP. A chemical investigation of *Sphaeranthus*

- indicus* Linn. J Am Pharm Assoc Am Pharm Assoc 1946;35:274.
15. Baslas KK. The essential oil from *Sphaeranthus indicus*. Perfum Essent Oil Rec 1959;50:765-8.
  16. Lodha V. Chemical analysis of the essential oil of *Sphaeranthus indicus*: An Ayurvedic plant of India. Indian Perfum 2003;47:29-30.
  17. Tiwari RD. The chemical examination of *Sphaeranthus indicus*. III. Study of the unsaponifiable matter from its oil. Proc Nat Acad Sci India 1963;33A: 349-50. Chem Abstr 1964;60:2040e.
  18. Gupta RK, Chandra S, Mahadevan V. Chemical composition of *Sphaeranthus indicus* Linn. Indian J Pharm 1969;29:47.
  19. Gogte MG, Ananthasubramanian L, Nargund KS, Bhattacharyya SC. Some interesting sesquiterpenoids from *Sphaeranthus indicus* Linn. (compositae). Indian J Chem Sect B 1986;25:233-8.
  20. Singh SK, Saroj KM, Tripathi VJ, Singh AK, Singh RH. An antimicrobial principle from *Sphaeranthus indicus* L. (Family Compositae). Int J Crude Drug Res 1988;26:235-9.
  21. Sohoni JS, Rojatkhar SR, Kulkarni MM, Dhaneshwar NN, Tavale SS, Gururow TN, et al. A new eudesmanolide and 2-hydroxycostic acid from *Sphaeranthus indicus* Linn. X-ray molecular-structure of 4 $\alpha$ , 5 $\alpha$ -epoxy-7 $\alpha$ -hydroxyeudesmanolide. J Chem Soc Perkin 1 1988;1:157-60.
  22. Singh SK, Tripathi VJ, Singh RH.  $\beta$ -D-Glucoside of (24S)-24-ethylcholesta-4,22-dien-3- $\beta$ -ol from *Sphaeranthus indicus* L. Indian Drugs 1989;26:317-8.
  23. Attaurrahman, Shekhani MS, Perveen S, Habiburrehman, Yasmin A, Ziaulhaque A, et al. 7-Hydroxyfrullanolide, an antimicrobial sesquiterpene lactone from *Sphaeranthus indicus* Linn. J Chem Res 1989;13:68.
  24. Shekhani MS, Shah PM, Yasmin A, Siddiqui R, Perveen S, Khan KM, et al. An immunostimulant sesquiterpene glycoside from *Sphaeranthus indicus*. Phytochemistry 1990;29:2573-6.
  25. Shekhani MS, Shah PM, Khan KM, Attaurrahman. New eudesmanolides from *Sphaeranthus indicus*. J Nat Prod 1991;54:882-5.
  26. Chughtai MI, Khokhar I, Ahmad A. Isolation, purification and structural determination of alkaloids from the flowers of *Sphaeranthus indicus*. Sci Int (Lahore) 1992;4:151-4.
  27. Rojatkhar SR, Nagasampagi BA. 7-Hydroxyeudesmanolides from *Sphaeranthus indicus*. Phytochemistry 1992;31:3270-1.
  28. Rojatkhar SR, Sawaikar DD, Nagasampagi BA. Photooxidation of 7-hydroxy eudesmanolide, a constituent from *Sphaeranthus indicus* Linn. Indian J Chem Sect B 1994;33:1203-4.
  29. Yadava RN, Kumar S. Chemical examination of the leaves of *Sphaeranthus indicus*. Asian J Chem 1998;10:764-6.
  30. Yadav RN, Kumar S. 7-Hydroxy-3',4',5,6-tetramethoxy flavone 7-O- $\beta$ -D-diglycoside, a new flavone glycoside from the stem of *Sphaeranthus indicus*. J Inst Chem 1998b; 70:164-6. Chem Abstr 1999;130:264845.
  31. Yadava RN, Kumar S. A novel isoflavone glycoside from the leaves of *Sphaeranthus indicus*. Fitoterapia 1999;70:127-9.
  32. Pujar PP, Sawaikar DD, Rojatkhar SR, Nagasampagi BA. Eudesmanoids from *Sphaeranthus indicus*. Fitoterapia 2000;71:264-8.
  33. Kaul PN, Rao BR, Bhattacharya AK, Singh K, Mallavarapu GR, Ramesh S. Essential oil composition of *Sphaeranthus indicus* L. J Essent Oil Res 2005;17:453-4.
  34. Mishra BB, Yadav SB, Singh RK, Tripathi V. A novel flavonoid C-glycoside from *Sphaeranthus indicus* L. (family compositae). Molecules 2007;12:2288-91.
  35. Jadhav RB, Sonawane KB, Deshpande NR, Rojatkhar SR. Two new eudesmanolides from *Sphaeranthus indicus* (Linn.). Indian J Chem Sect B 2007;46:379-81.
  36. Connolly JD, Thornton IM. Sesquiterpenoid lactones from the liverwort *Frullania tamarisci*. Phytochemistry 1973;12:631.
  37. Sharma MC. Ovicidal and growth disrupting activity of *Sphaeranthus indicus* extract against filaria vector. Int Pest Control 1996;38:160-1.
  38. Tiwari BK, Khosa RL. Evaluation of hepatoprotective activity of *Sphaeranthus indicus* flower heads extract. J Nat Rem 2008;8:173-8.
  39. Tiwari BK, Khosa RL. Hepatoprotective and antioxidant effect of *Sphaeranthus indicus* against acetaminophen-induced hepatotoxicity in rats. J Pharm Sci Res 2009;1:26-30.
  40. Sundari K, Govindaraju G, Bharathi B. Hepatoprotective effect of ethanolic extracts of *Sphaeranthus indicus* (Linn.) on paracetamol-induced liver toxicity in rats. Int J Appl Biol Pharm Technol 2011;2:315-21.
  41. Sundari K, Govindaraju G. Protective effects of aqueous extract of *Sphaeranthus indicus* L. on paracetamol induced hepatic damage in rats. Res J Pharm Biol Chem Sci 2012;3:62-9.
  42. Nayak SS, Maity TK, Maiti BC. Antitussive and synergistic effects of sleeping time induced by standard sedatives of *Sphaeranthus indicus* plant extracts. J Adv Pharm Res 2010;1:123-32.
  43. Sadaf F, Saleem R, Ahmed M, Ahmad SI, Navaid-ul-Zafar. Healing potential of cream containing extract of *Sphaeranthus indicus* on dermal wounds in Guinea pigs. J Ethnopharmacol 2006;107:161-3.
  44. Jha RK, Garud N, Nema RK. Excision and incision wound healing activity of flower head alcoholic extract of *Sphaeranthus indicus* Linn. in albino rats. Glob J Pharmacol 2009;3:32-7.
  45. Begum HS, Arshiya WS. Efficacy of *Sphaeranthus indicus* and cream of *Lawsonia inermis* in cervical erosion with cervicitis. Eur J Integr Med 2011;3:183-8.
  46. Ambavade SD, Mhetre NA, Tate VD, Bodhankar SL. Pharmacological evaluation of the extracts of *Sphaeranthus indicus* flowers on anxiolytic activity in mice. Indian J Pharmacol 2006;38:254-9.
  47. Mhetre NA, Ambavade SD, Bodhankar SL. Neuroleptic activity of extracts of *Sphaeranthus indicus* flowers in mice. Indian J Nat Prod 2006;22:24-7.
  48. Bafna AR, Mishra SH. Immunomodulatory activity of methanol extract of flower-heads of *Sphaeranthus indicus* Linn. Ars Pharm 2004;45:281-91.
  49. Bafna AR, Mishra SH. Protective effect of bioactive fraction of *Sphaeranthus indicus* Linn. against cyclophosphamide induced suppression of humoral immunity in mice. J Ethnopharmacol 2006;104:426-9.
  50. Bafna AR, Mishra SH. Immunomodulatory activity of petroleum ether extract of flower heads of *Sphaeranthus indicus* Linn. J Herb Pharmacother 2007;7:25-37.
  51. Ignacimuthu S, Maria PS, Pavunraj M, Selvarani N. Antifeedant activity of *Sphaeranthus indicus* L. against *Spodoptera litura* Fab. Entomon 2006;31:41-4.
  52. Sharma S, Jalalpure SS, Semwal B, Tandon S, Agarwal N. Anthelmintic activity of the whole plant of *Sphaeranthus indicus* Linn. Int J Ayur Herb Med 2011;1:18-23.
  53. Malairajan P, Babu GV, Saral A, Mahesh S, Gitanjali. Analgesic Activity of *Sphaeranthus indicus* Linn. Int J Drug Dev and Res 2012;4:130-2.
  54. Nanda BK, Jena J, Rath B, Behera BR. Analgesic and antipyretic activity of whole parts of *Sphaeranthus indicus* Linn. J Chem Pharm Res 2009;1:207-12.
  55. Prabhu KS, Lobo R, Shirwaikar A. Antidiabetic properties



- of the alcoholic extract of *Sphaeranthus indicus* in streptozotocin-nicotinamide diabetic rats. *J Pharm Pharmacol* 2008;60:909-16.
56. Pareek A, Suthar M, Bansal VK, Chauhan RK, Batra N. *In vitro* study of *Sphaeranthus indicus* on glucose uptake by isolated rat hemi-diaphragm. *J Pharm Res* 2010;3:2284-5.
  57. Ghaisas M, Zope V, Takawale A, Navghare V, Tanwar M, Deshpande A. Preventive effect of *Sphaeranthus indicus* during progression of glucocorticoid-induced insulin resistance in mice. *Pharm Biol* 2010;48:1371-5.
  58. Jha RK, Mangilal, Bhandari A, Nema RK. Antidiabetic activity of flower head petroleum ether extracts of *Sphaeranthus indicus* Linn. *Asian J Pharm Clin Res* 2010;3:16-9.
  59. Muhammad RT, Malik S, Ghulam M, Waseem H. Determination of the anti-diabetic effect of methanolic extract of *Sphaeranthus indicus* L. on alloxan induced diabetic rabbits. *Lat Am J Pharm* 2011;30:378-82.
  60. Ramachandran S, Asokkumar K, Maheswari MU, Ravi TK, Sivashanmugam AT, Saravanan S, et al. Investigation of antidiabetic, antihyperlipidemic and *in vivo* antioxidant properties of *Sphaeranthus indicus* Linn. in type 1 diabetic rats: An identification of possible biomarkers. *Evid Based Complement Alternat Med* 2011;2011:1-8.
  61. Dubey KS, Ansari AH, Hardaha M. Antimicrobial activity of the extract of *Sphaeranthus indicus*. *Asian J Chem* 2000;12:577-8.
  62. Dubey LN, Sahu B. Antimicrobial activity of terphenoidal compound isolated from *Sphaeranthus indicus* against *Bacillus subtilis*. *Geobios (Jodhpur)* 2007;34:195-6.
  63. Upadhyay R, Mishra N. Antimicrobial activity of flower extracts of *Sphaeranthus indicus* on coliforms. *Asian J Exp Biol Sci* 2011;2:513-6.
  64. Selvi BT, John SA, Theivandran G. Preliminary phytochemical investigation and antimicrobial activity of *Sphaeranthus indicus* Linn. *Ad Plant Sci* 2011;24:81-5.
  65. John SA, Tamilmaraiselvi B. Preliminary phytochemical investigation and antimicrobial activity of *Sphaeranthus indicus* Linn. *AJMBES* 2011;13 (2):251-256.
  66. Duraipandiyan V, Kannan P, Ignacimuthu S. Antimicrobial activity of *Sphaeranthus indicus* L. *Ethno Leaflets* 2009;13:320-5.
  67. Shaikh D, Naqvi BS, Shaikh R. The antibacterial principles of *Sphaeranthus indicus*. Isolation, purification and anti-bacterial action. *Pak J Sci Ind Res* 1986;29:366-71.
  68. Vijaya K, Ananthan S. Microbiological screening of Indian medicinal plants with special reference to enteropathogens. *J Altern Complement Med* 1997;3:13-20.
  69. Garg SC, Kasera HL. *In vitro* antibacterial activity of the essential oil of *Sphaeranthus indicus* L. *Fitoterapia* 1983;54:37-9.
  70. Naqvi BS, Hashmi K, Sheikh D, Mahdi A. Antibacterial activity in fruits and vegetables. *Pak J Pharmacol* 1998;15:7-11.
  71. Garg SC, Kasera HL. Antifungal activity of the essential oil of *Sphaeranthus indicus* Linn. *Papai J* 1982;4:23-4.
  72. Lalla PM, Deshpande AR, Musaddip M, Shahare NH, Ukesh CS. Antimicrobial activity of medicinal plant *Sphaeranthus indicus*. In: International Conference on Modern Trends in Plant Sciences with Special Reference to the Role of Biodiversity in Conservation, Maharashtra, Amravati; 2005. p. 96.
  73. Zachariah SM, Pappachen LK, Aneesh TP, Alex L, Sumith G, John MS, Praseetha MC, Nagalekshmi R. Phytochemical and pharmacological screening of *Sphaeranthus indicus* Linn. for antimicrobial activity. *IJPSR* 2010;1:169-73.
  74. Vimalanathan S, Ignacimuthu S, Hudson JB. Medicinal plants of Tamil Nadu (Southern India) are a rich source of antiviral activities. *Pharm Biol* 2009;47:422-9.
  75. Dhar ML, Dhar MM, Dhawan BN, Mehrotra BN, Ray C. Screening of Indian plants for biological activity: I. *Indian J Exp Biol* 1968;6:232-47.
  76. Tiwari A, Saxena RC. Repellent and feeding deterrent activity of *Sphaeranthus indicus* against *Tribolium castanum*. *Bio-Res Bull* 2003;1:179-84.
  77. Hameed SV, Shah DS. Effect of aqueous extracts of *S. indicus* against *Culex fatigans*, weid (Diptera; Culicidae). *J Exp Zool* 2003;6:279-84.
  78. Nisha M, Kalyanasundaram M, Paily KP, Abidha, Vanamail P, Balaraman K. *In vitro* screening of medicinal plant extracts for macrofilaricidal activity. *Parasitol Res* 2007;100:575-9.
  79. Shirwaikar A, Prabhu KS, Punitha IS. *In vitro* antioxidant studies of *Sphaeranthus indicus* (Linn.). *Indian J Exp Biol* 2006;44:993-6.
  80. Nahata A, Dixit VK. *Sphaeranthus indicus* attenuates testosterone induced prostatic hypertrophy in rats. *Phytother Res* 2011;25:1839-48.
  81. Galani VJ, Patel BG. Effect of hydroalcoholic extract of *Sphaeranthus indicus* against experimentally induced anxiety, depression and convulsions in rodents. *Int J Ayurveda Res* 2010;1:87-92.
  82. Sharma S. *Sphaeranthus indicus* (East Indian globe thistle)-A promising natural remedy for psoriasis. *J Am Acad Dermatol* 2010;62:131.
  83. Sarpate RV, Deore TK, Tupkari SV. Bronchodilatory effect of *Sphaeranthus indicus* Linn. against allergen induced bronchospasm in guinea pigs. *Pharmacogn Mag* 2009;5:74-7.
  84. Mathew JE, Srinivasan KK, Dinakaran V, Joseph A. Mast cell stabilizing effects of *Sphaeranthus indicus*. *J Ethnopharmacol* 2009;122:394-6.
  85. Pande VV, Dubey S. Antihyperlipidemic activity of *Sphaeranthus indicus* on atherogenic diet induced induced hyperlipidemia in rats. *Int J Green Pharm* 2009;3:159-61.
  86. Badgujar LB, Ghosh P, Gaur V, Bodhankar SL. Effect of petroleum ether extract of *Sphaeranthus indicus* Linn. on complete Freund's adjuvant induced arthritis in laboratory rats. *Pharmacologyonline* 2009;2:281-91.
  87. Meher BR, Rath BG, Biswal S. Evaluation of anti-inflammatory activity of ethanolic extract of *Sphaeranthus indicus*. *J Chem Pharm Res* 2011;3:831-4.
  88. Ali A, Shyom Naqvi SB, Gauhar S, Saeed R. Anti-inflammatory and analgesic activities of ethanolic extract of *Sphaeranthus indicus* Linn. *Pak J Pharm Sci* 2011;24:405-9.
  89. Chakrabarti D, Suthar A, Jayaraman G, Muthuvelan B, Sharma S, Padigar M. NPS31807, a standardized extract from *Sphaeranthus indicus*, inhibits inflammatory, migratory and proliferative activity in keratinocytes and immune cells. *Pharmacol Pharm* 2012;3:178-94.
  90. Jain A, Basal E. Inhibition of *Propionibacterium acnes*-induced mediators of inflammation by Indian herbs. *Phytomedicine* 2003;10:34-8.
  91. Fonseca LC, Dadarkar SS, Lobo AS, Suthar AC, Chauhan VS, Chandrababu S, et al. 7-hydroxyfrullanolide, a sesquiterpene lactone, inhibits pro-inflammatory cytokine production from immune cells and is orally efficacious in animal models of inflammation. *Eur J Pharmacol* 2010;644:220-9.
  92. Tenpe CR, Upaganlawar AB, Nayak SH, Yeole PG. Effect of *Sphaeranthus indicus* Linn. on lipid profile in dexamethasone induced rats. *Biomed* 2008;2:400-3.
  93. Srinivasan VM, Jessy KK, Alex AE. Effect of *Sphaeranthus indicus* Linn. on gentamicin induced acute renal failure in rats. *Indian J Pharmacol* 2008;40:71.
  94. Srivastwa SC, Khan MS, Vohora SB. Pharmacological and haemostatic investigations on *Sphaeranthus indicus* Linn. *Indian J Physiol Pharmacol* 1971;15:27-33.

95. Nanba T, Hatsutori Y, Shimomura K, Nakamura M, Masami (Mikimoto Seiyaku KK, Nanba Tsuneo). Jpn Kokai Tokkyo Koho 1995; JP 07, 138, 180 [95,138,180]. Chem Abstr 1995;123:92919r. (as cited in J Ethnopharmacol 2006;107:161-3)
96. Sharma M, Saxena RC. *Sphaeranthus indicus* as mosquito larvicide. J Appl Zool Res 1996;7:87-8.
97. Ali MA, Mikage M, Kiuchi F, Tsuda Y, Konda K. Screening of crude drugs used in Bangladesh for nematocidal activity on the larva of *Toxocara canis*. Shoyakugaku Zasshi 1991;45:206-14.

**How to cite this Article:** Ramachandran S. Review on *Sphaeranthus indicus* Linn. (Kottai-karantai). Phcog Rev 2013;7:157-69.

**Source of Support:** Nil, **Conflict of Interest:** None declared